



Parking in Parkland: Accessibility to Edmonton's Ribbon of Green

Presentation by Alyssa Peters, E.I.T. | June 5, 2018

Outline



- What is Edmonton's Ribbon of Green?
- Transportation Planning's Role
- Study Methodology
- Study Challenges and Findings
- Applying the Findings to the Ribbon of Green Project
- Next Steps

What is Edmonton's Ribbon of Green?



- North Saskatchewan River runs through Edmonton from the SW to the NE
- Previously Completed:
 - City of Edmonton's Ribbon of Green Concept Plan (1990)
 - Ribbon of Green Master Plan (1992)
- Expected significant population growth within study areas will place increased pressure on access to the River Valley

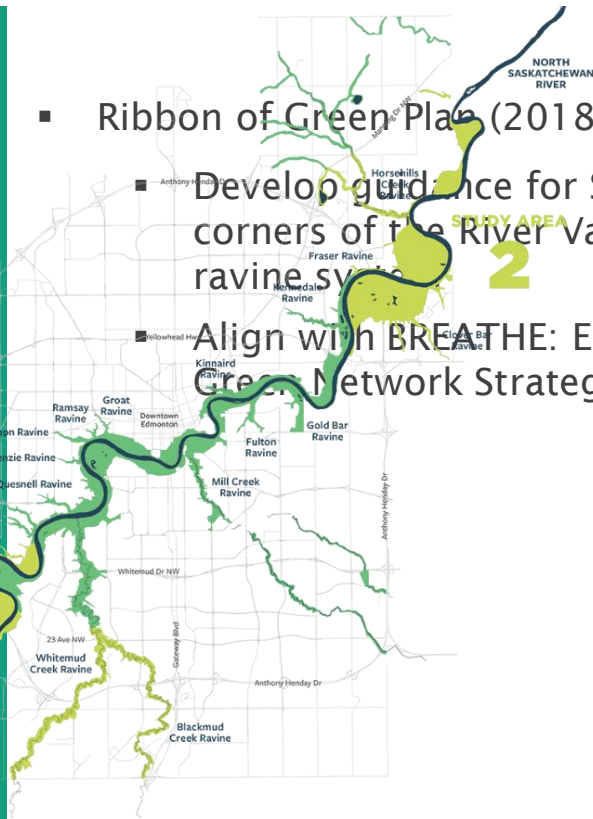
What is Edmonton's Ribbon of Green?



- Ribbon of Green Plan (2018)

- Develop guidance for SW and NE corners of the River Valley and ravine systems

- Align with BREATHE: Edmonton's Green Network Strategy



Transportation Planning's Role



- Identify access opportunities and constraints
- Logically integrate existing and future neighbourhoods with future trail and amenity nodes
- Highlight potential parking and accessibility demands associated with different types of proposed parks
- Why is this important?

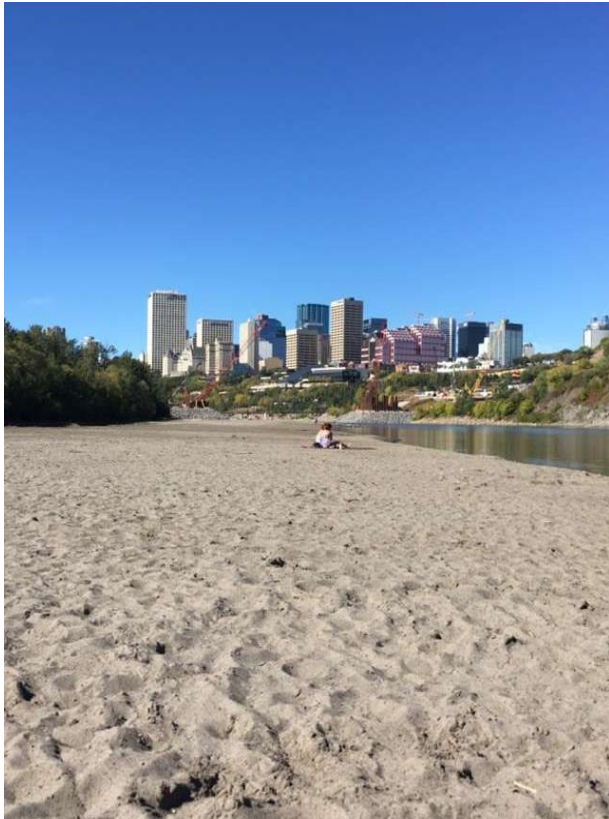
Pave Paradise to put up a Parking Lot?

“Citizens want **variety** in everyday recreational activities, they want to **explore the City** and are **willing to drive** from where they live or work to experience new parts of the City and the River Valley System.”

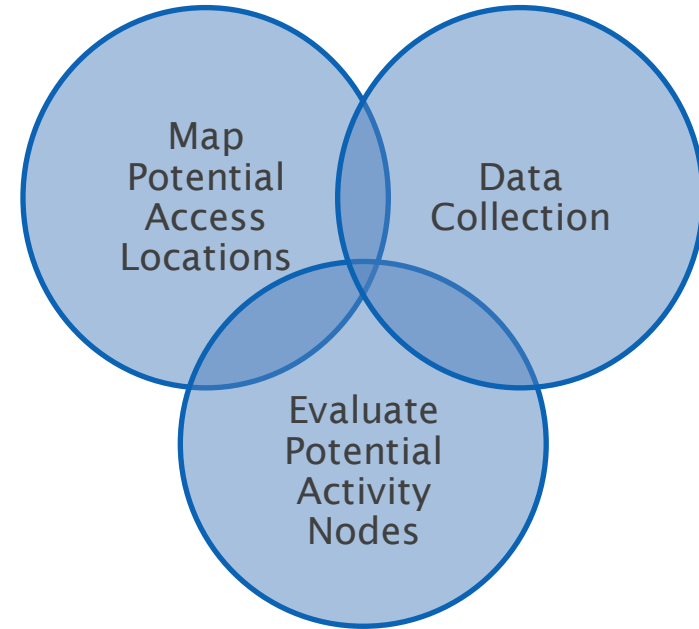
Oleskiw River Valley Park



Accidental Beach

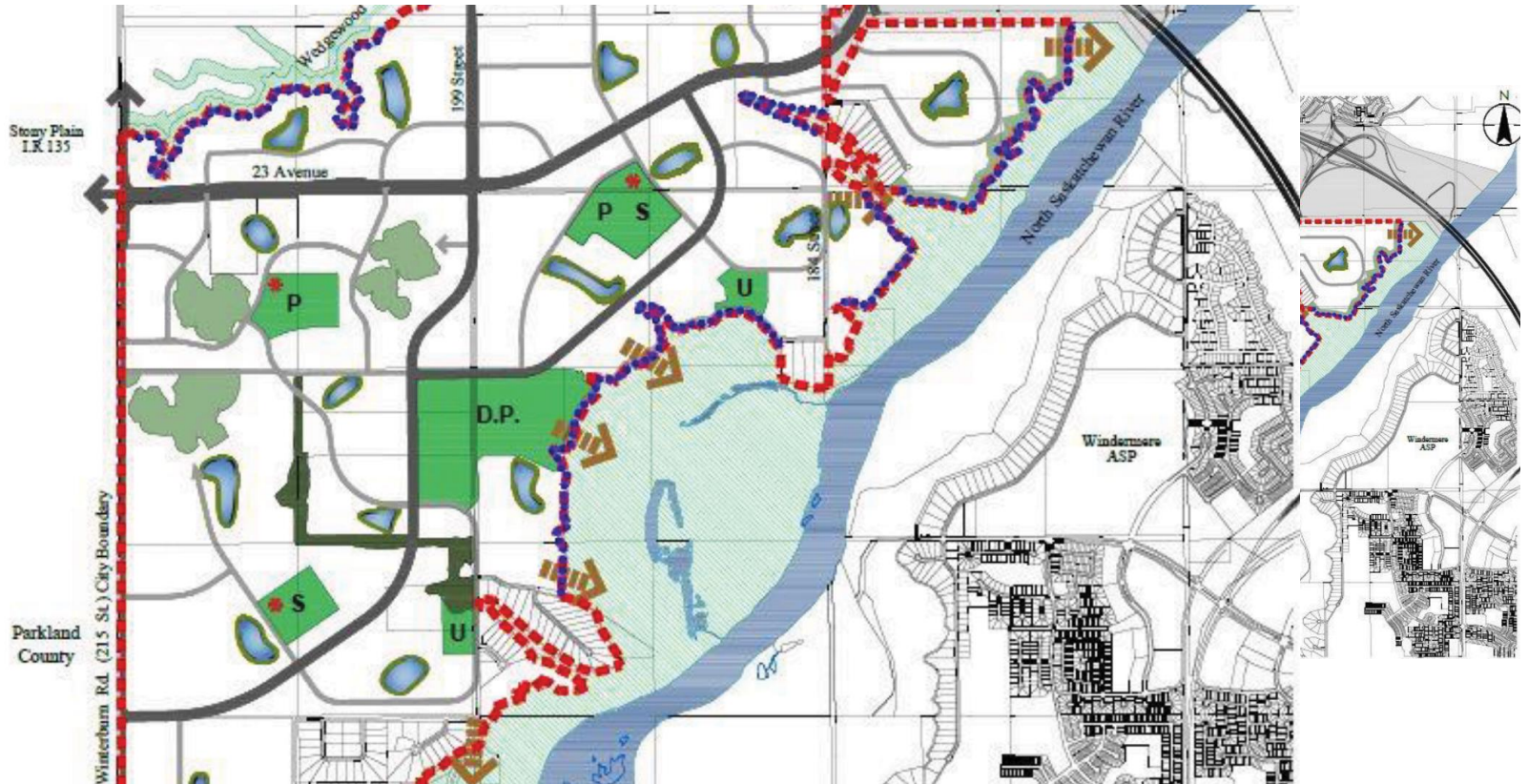


Study Methodology



Map Potential Access Locations

- Review Structural future



Evaluate Potential Activity Nodes

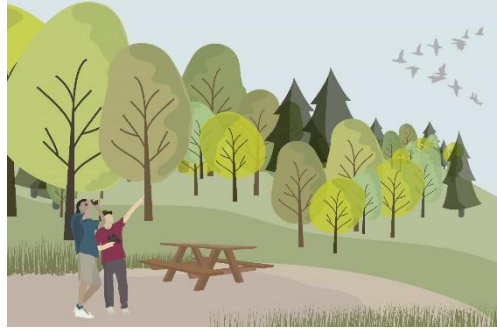


- Land Management Classification
 - Preservation
 - Conservation
 - Trail-based Recreation
 - Natural Recreation
 - Active/Working Landscapes
 - Intensive Recreation
 - Agriculture + Horticulture
 - Urban-Services + City-Wide Attractions
- Identified the associated modes and vehicle types required to be accommodated below the top of bank for various park types

Evaluate Potential Activity Nodes



Preservation



Conservation: Natural Recreation



Conservation: Trail-based Recreation



Active/Working Landscapes:
Intensive Recreation

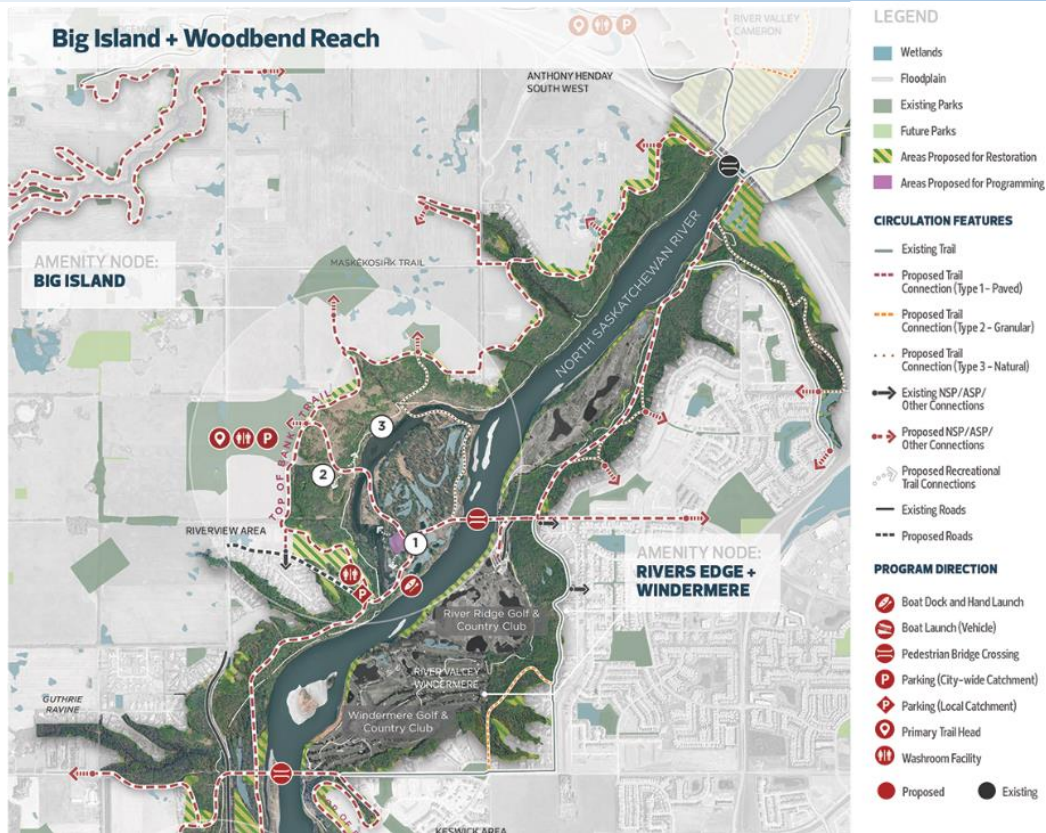


Active/Working Landscapes:
Agriculture + Horticulture

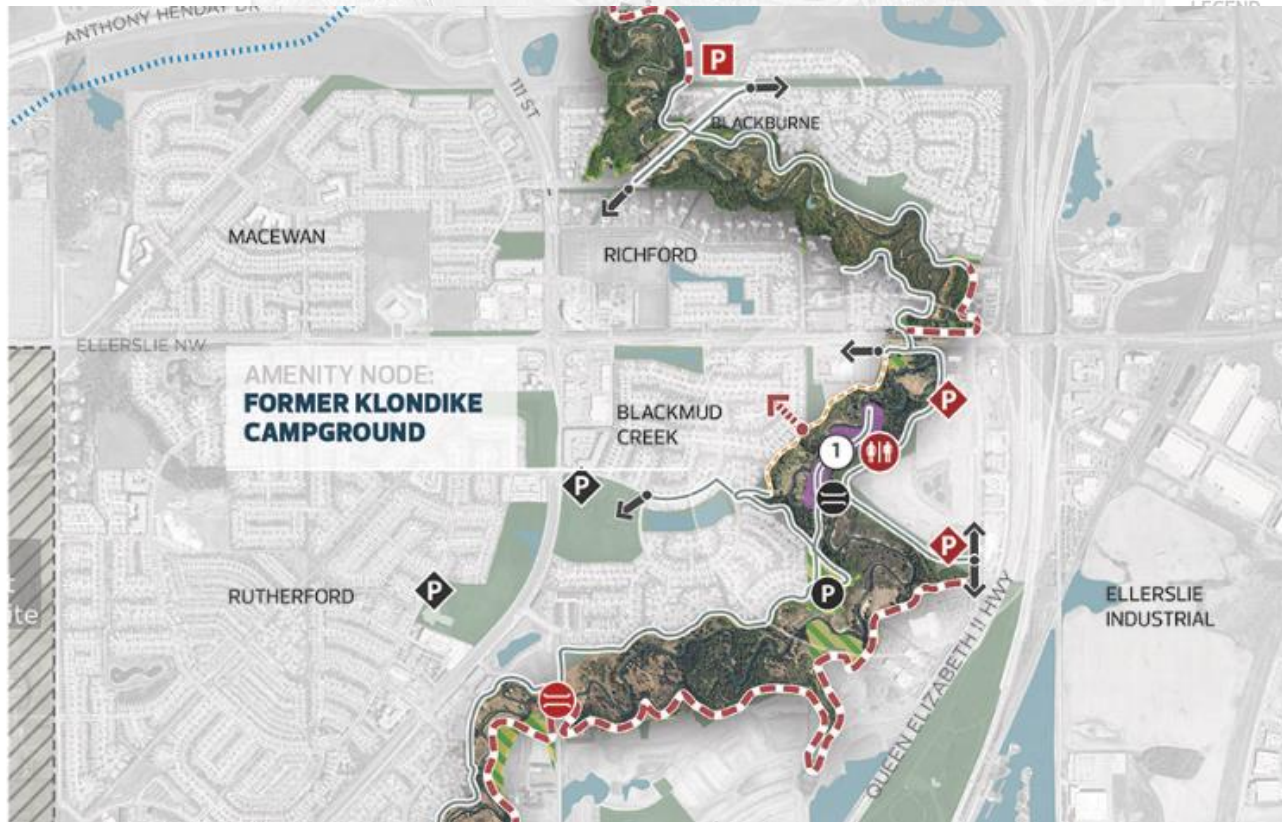


Active/Working Landscapes:
Urban Services + City-wide Attractions

Big Island



Klondike Campground



- LEGEND
- Existing NSP/ASP/Other Connections
 - Proposed NSP/ASP/Other Connections
 - Existing LRT Alignment
 - Future LRT Alignment

PROGRAM DIRECTION

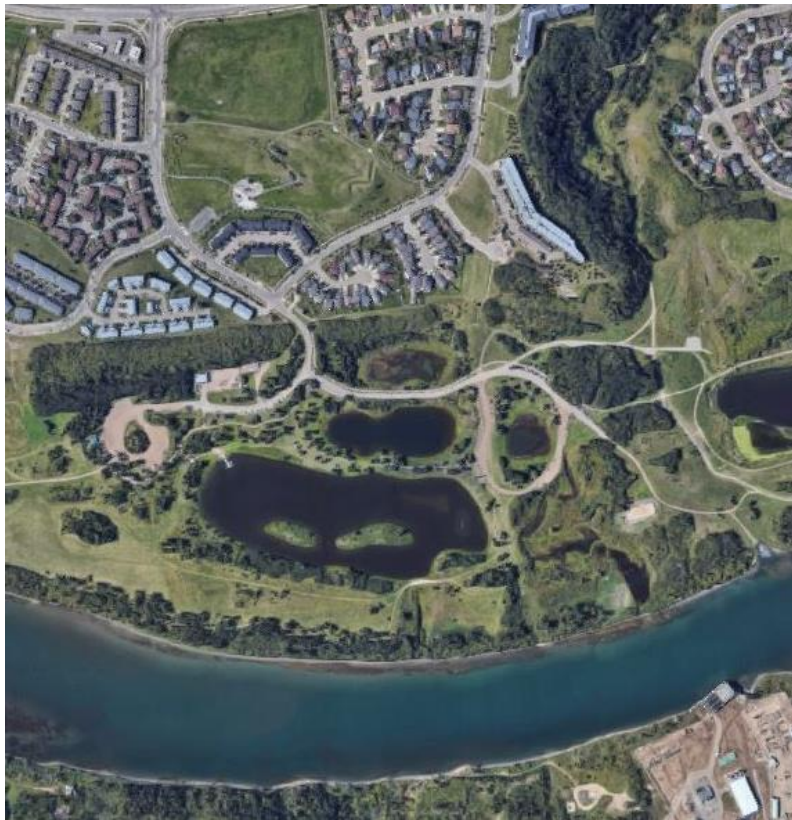
- Pedestrian Bridge Crossing
- Parking (City-wide Catchment)
- Parking (Local Catchment)
- On-Street Parking
- Primary Trail Head
- Washroom Facility
- Proposed
- Existing

Data Collection



- **Purpose:** Estimate the magnitude of parking anticipated to be generated by park space in the Ribbon of Green
- Parking Accumulation Surveys at 6 existing parks during Summer/Fall/Winter/Spring:
 - Terwillegar Park (Metropolitan Park)
 - Victoria Park (Metropolitan Park)
 - Hermitage Park (District Park)
 - Argyll Park (District Park)
 - Mactaggart Sanctuary (Ecological Park)
 - Oleskiw River Valley Park (Trailhead)

Data Collection Challenges



- Weather
 - Unseasonably warm February 2017
 - Capturing warm summer days
- Large study areas – identifying the potential areas of parking influence
- Not able to establish a parking rate to be applied to future parking sites - lack of consistent variable

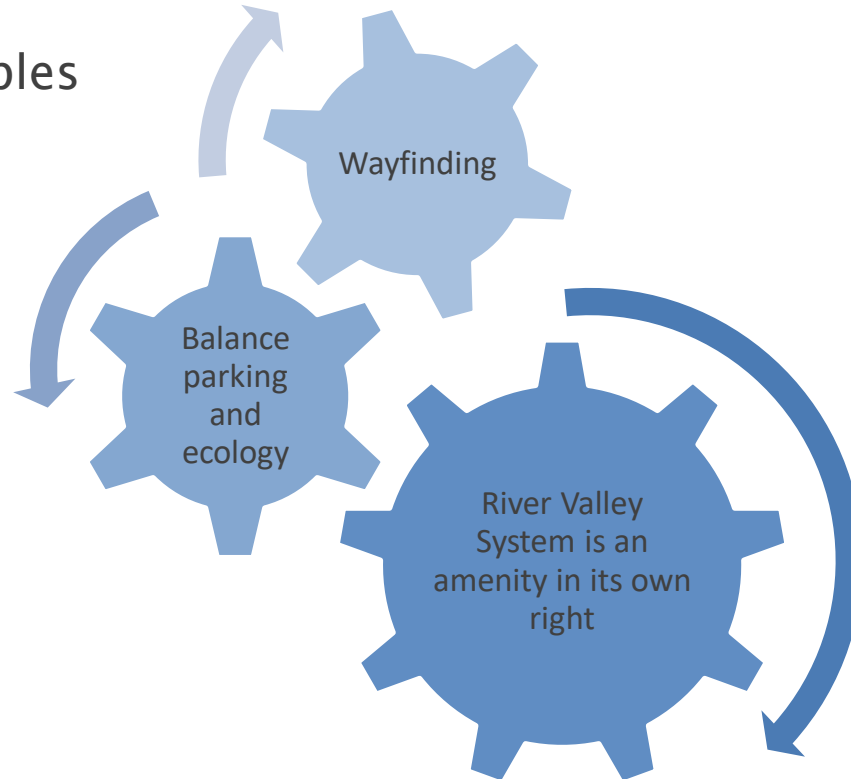
Data Collection Findings



- High parking demands associated with Metropolitan Parks
- Parking lots were utilized first, when full, vehicles were illegally parked, top of bank roadway parking virtually empty
- Parking demand for ecological parks with lack of connections was generally low

Applying the Findings to Ribbon of Green Project

Guiding Principles



Applying the Findings to Ribbon of Green Project

Potential Parking Supply Ranges

Amenity Type	Parking Range
Local Amenity	20 to 30 spaces
Regional Amenity	150 to 200 spaces

- Prioritize on-street parking and look for shared parking opportunities
- Parking management (provide exclusive parking for boat launches, barrier free, etc.)
- Staging
 - Plan for ultimate needs, but don't build all at once

Location and magnitude of parking will be determined on a case-by-case basis

Next Steps

- Public Consultation Stage - currently underway
- Public Hearing 2019
- Ribbon of Green Plan will inform future site-specific park plans

QUESTIONS?